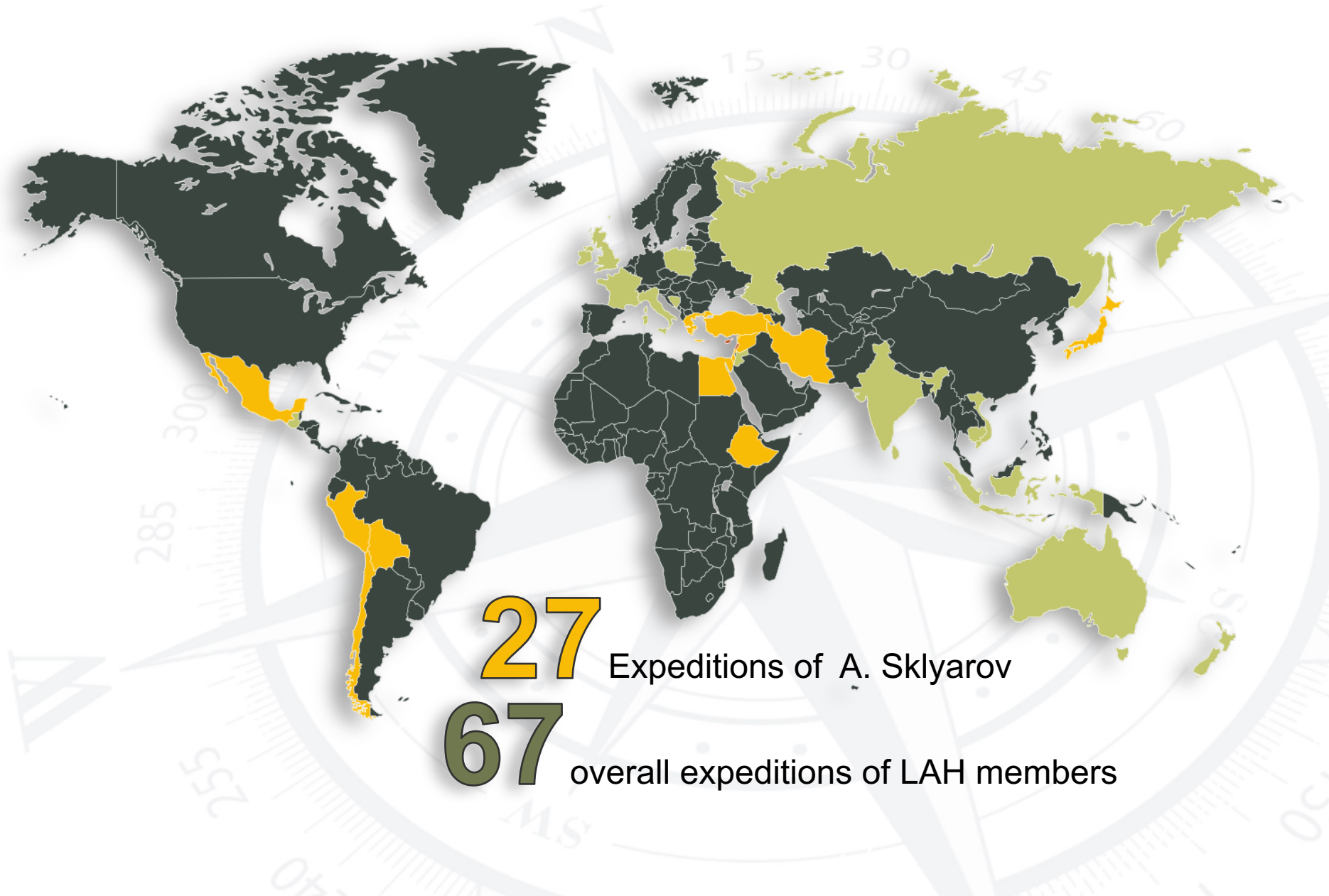




LAH: TODAY AND TOMORROW

THE DEVELOPMENT PROGRAM OF THE
“LABORATORY OF ALTERNATIVE HISTORY”
RESEARCH CENTER

LAH IN FIGURES

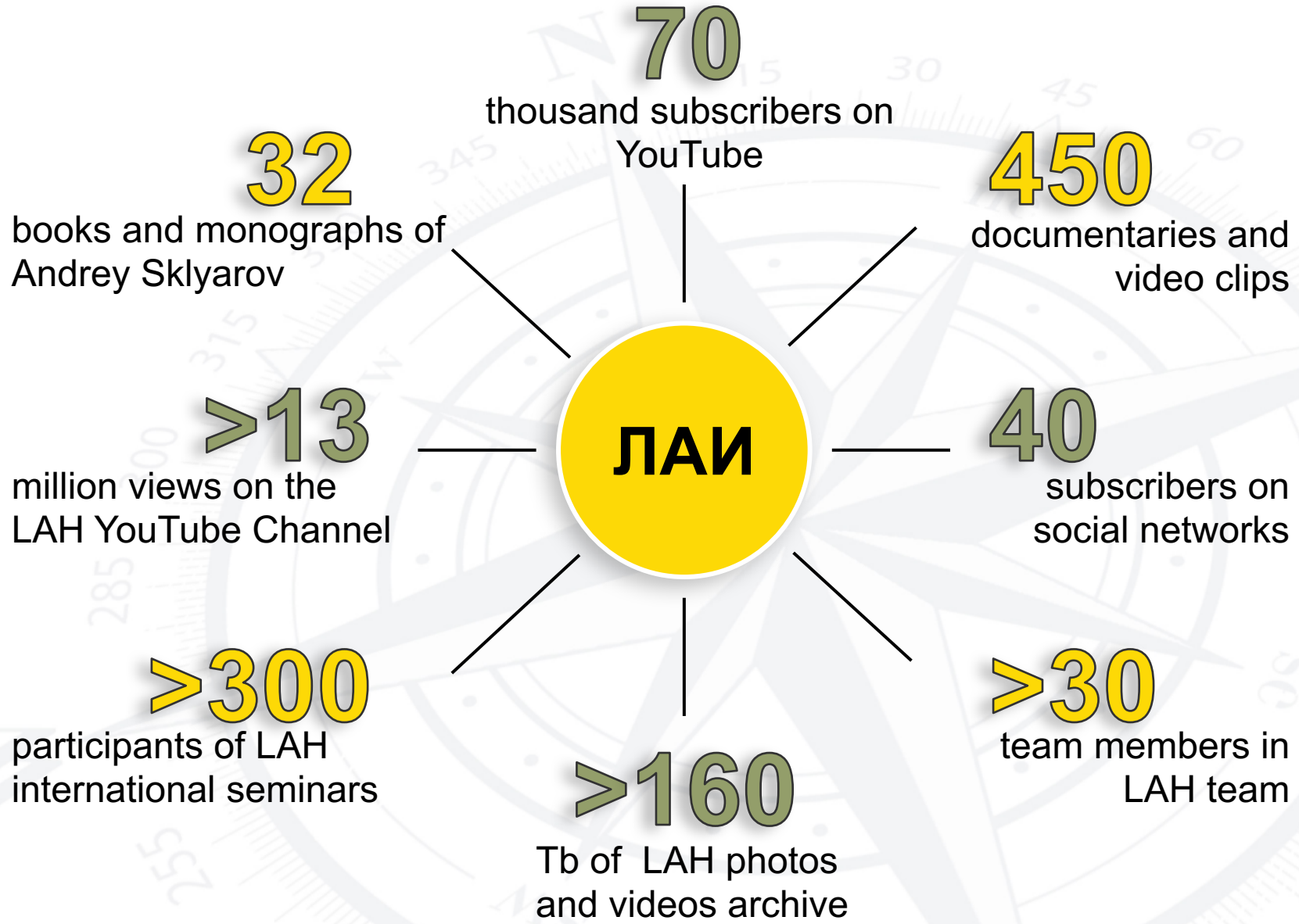


27
67

Expeditions of A. Sklyarov

overall expeditions of LAH members

LAH IN FIGURES



LAH ACTIVITIES



Exploration

Further acquisition of facts and strengthening the evidence



Enlightenment

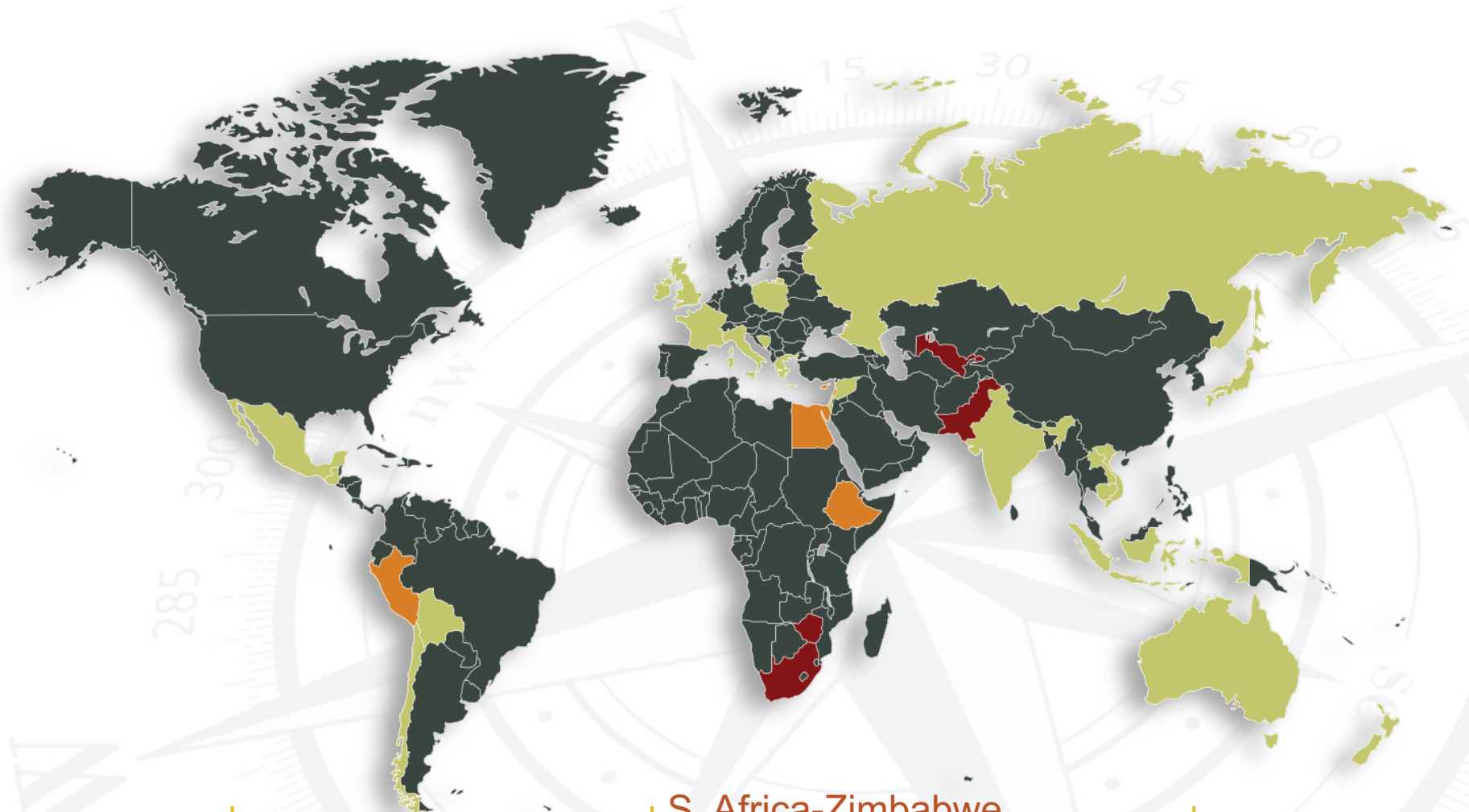
Qualitative increase in audience by organizing events, creating and publish exploration and research results



Research

Continuation of the started and organization of the new research

ACQUISITION OF FACTS. EXPEDITIONS



2016

Crete
Lebanon

2017

S. Africa-Zimbabwe
Egypt
Peru

2018

Ethiopia
Pakistan?

STRENGTHENING THE EVIDENCE



Finding the ways of cooperation with public research organizations and individual scientists: archeologists, geologists, culture experts, architects, geneticists.

Involvement in research projects of a new generation of scientists with unbiased approach to scientific research who are acting regardless of the status and regalia of their opponents

Confirmation of facts by independent experts: laboratories, public research organizations and design bureaus

ENLIGHTENMENT



Broadening the audience in social networks

Development of a new version of the website lah.ru in order to increase conversion

Translation of books and films into English

Making and distribution of films of expeditions

Organization of seminars and their online streaming

Systematization of collected materials for further sharing



The next seminar will take place in Greece in March/April 2017

RESEARCH

Building techniques

Maximum use of natural landforms with perfectly-fit elements of the structures made of natural stone provides high seismic resistance and saves building materials

Technological solutions are perfectly adapted to construction tasks in remote mountain areas (cost reduction)



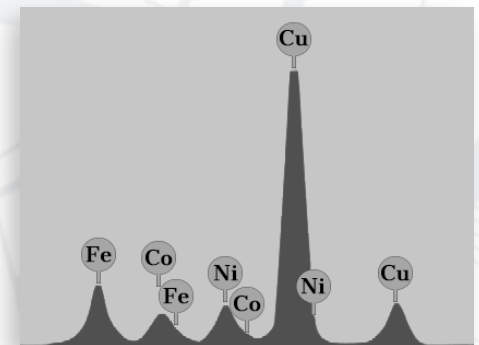
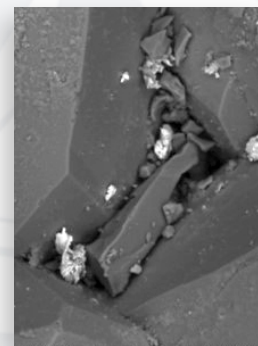
RESEARCH

Mobile Tools for hard rock processing

Microscopic inclusions on processed surfaces allow to determine the composition of the tool material.

Preliminary analyzes reveal the presence of nontrivial high-entropic alloys

It is possible to discover new alloys with unknown properties that can serve for innovative technologies in future



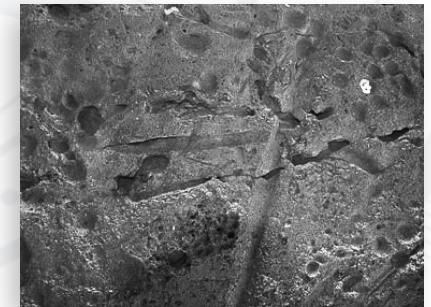
RESEARCH

«Plasticine technology»

Stone processing after its softening (under the room temperature) with subsequent curing.

There are traces of such technology, however, at the moment no information available about physical or chemical background of the process.

The use of "plasticine technology" removes the problem of tool wear and allows us to achieve almost any shape of the end product



RESEARCH

GENETIC RESEARCH

Nicolay Vavilov's research tells us that the basic grain crops have been genetically modified (engineered) from the wild ones.

It's possible to search for the genetic technology being used in ancient times by comparing the DNA of wild and cultivated species

The use of revealed laws to other crops can significantly reduce the risk of negative consequences of using GMOs



RESEARCH

«THE PYRAMIDS EFFECT»

The impact of pyramidal structures on biological, physical, chemical and other processes
Preliminary experiments reveal the impact of pyramid shape on time

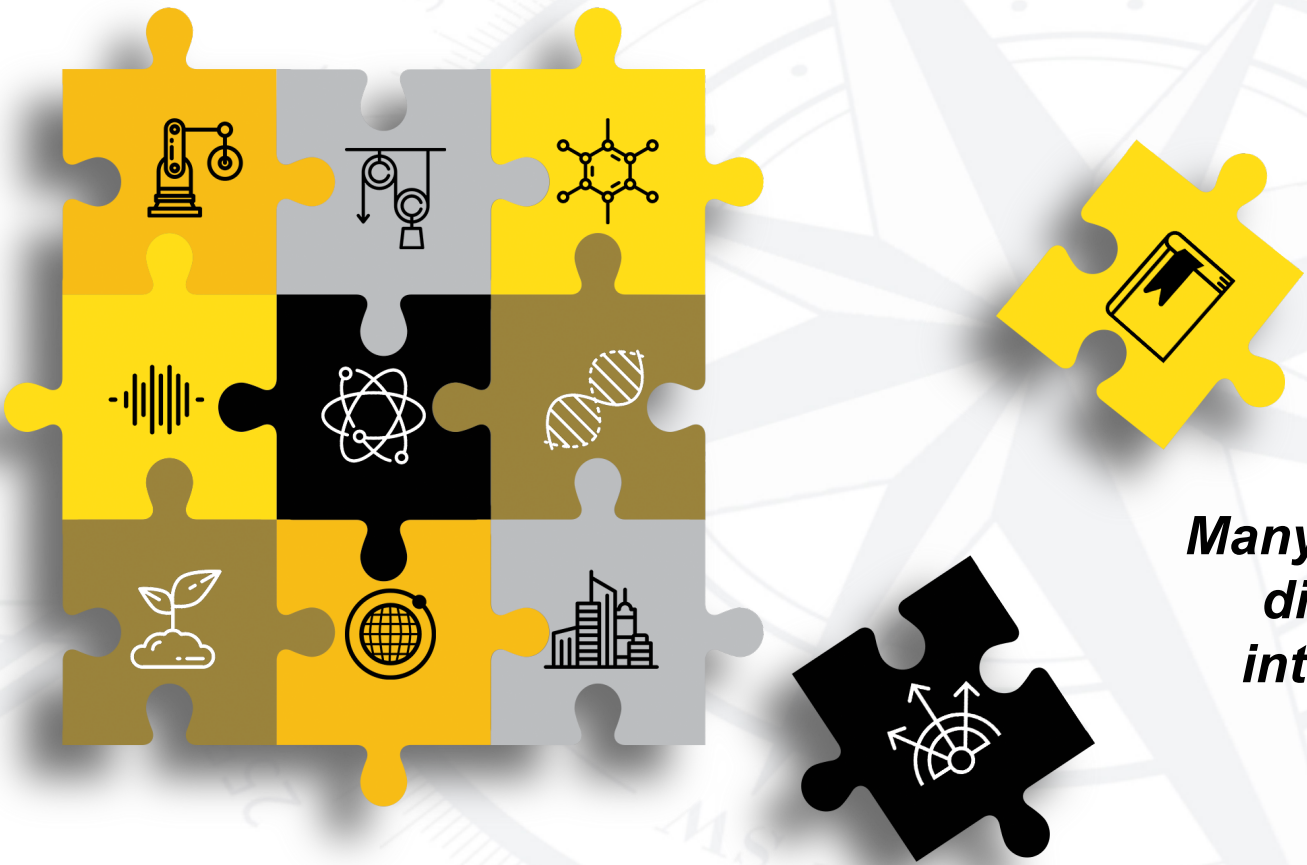
The research results can significantly expand current fundamental scientific knowledge (with possible practical applications)





«SIDESTEP» PROJECT

The purpose of the project is to create conditions for collaborative work of researchers from different areas of scientific knowledge. The project will include sections of LAH research as well as other sections of the invited teams



Many of the scientific discoveries are interdisciplinary!

IMPORTANT!

Stick to scientific approach:



When collecting and documenting information



When analyzing acquired information



When investigating or researching



When preparing material for publishing



The scientific method is a body of techniques for investigating phenomena, acquiring new knowledge, or correcting and integrating previous knowledge. To be termed scientific, a method of inquiry is commonly based on empirical or measurable evidence subject to specific principles of reasoning. The scientific method is an ongoing process, which usually begins with observations about the natural world. Human beings are naturally inquisitive, so they often come up with questions about things they see or hear and often develop ideas (hypotheses) about why things are the way they are. The best hypotheses lead to predictions that can be tested in various ways, including making further observations about nature. In general, the strongest tests of hypotheses come from carefully controlled and replicated experiments that gather empirical data. Depending on how well the tests match the predictions, the original hypothesis may require refinement, alteration, expansion or even rejection. If a particular hypothesis becomes very well supported a general theory may be developed.

«LAH» RESEARCH CENTER TEAM

Board of directors



Maksim Lyamenkov

Chairman
Sponsor relations
Media Production



Danyar Adigamov

Board co-ordinator
Investors relations



Aleksey Pavlov

Researches in History
Organization of external events



Ekaterina Manzhosova

Process Development
Crowdfunding
IT projects



Maria Dudakova

Researches in Architecture
Organization of local events



Dmitry Pavlov

PhD., Chairman of Research Institute of hyper-complex systems in geometry and physics



Andrey Tarasov

Legislation issues

«LAH» RESEARCH CENTER TEAM

RESEARCHERS



Yulia Gorlova



Andrey Kuznetsov



Igor Levashov



Andrey Silverstov



Elena Kulbitskaya



Natalia Krylova



Adrian Sabo



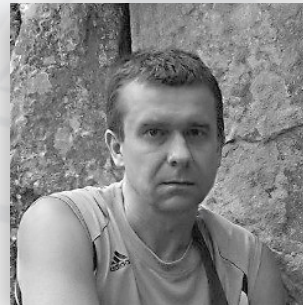
Sergey Vantsak



Aleksey Klevtsov



Oksana Luthy



Vladimir Ozhegov



Victoria Golubtsova

«LAH» RESEARCH CENTER TEAM

EDITORS AND MEDIA SUPPORT



Mikhail Burachenko

Editor-in-chief and coordinator of the social Internet resources

Administrators of the website «LAH Cinema»

- Dmitry Morozov
- Mikhail Burachenko

«LAH» YouTube Channel Administrators

- Dmitry Morozov
- Mikhail Burachenko

Editors of «LAH» group Vkontakte

- Natalia Nosova
- Dmitry Lagun
- Irina Morozova
- Sergey Deshevoy
- Mikhail Burachenko
- Viktoria Golubtsova
- Tatiana Ustyantseva
- Nadezhda "Belka"
- Armen Petrosyan
- Oleg Belyak
- Pavel Kormakov
- Aleksey Klevtsov

«LAH» forum Administrators

- Marina Martynyuk
- Viktor Shpakovsky
- Mikhail Burachenko
- Aleksey Klevtsov
- Sergey Bazarov
- Natalia Nosova
- Nadezhda "Belka"


«LAH» Facebook group Administrators

- Ekaterina Manzhosova
- Danyar Adigamov
- Maria Dudakova

«LAH» RESEARCH CENTER TEAM

We always welcome new active participants aspiring for knowledge and willing to make their intellectual contribution to development of the project of studying the heritage of ancient civilizations!





Science Development Fund "III Millennium"
"Laboratory of alternative history"
Research Center
Moscow 2016